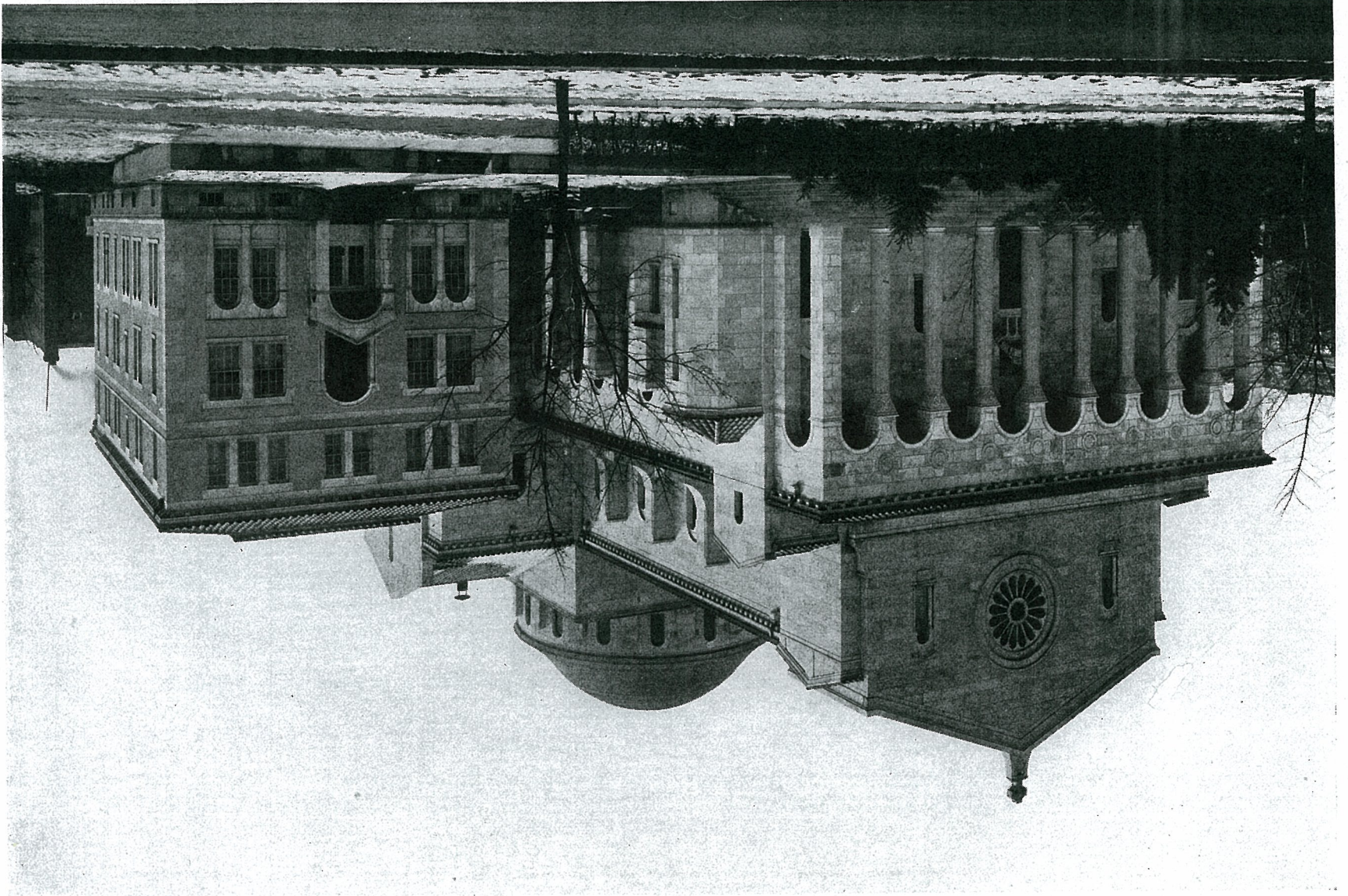


MURPHY & OLMSTED, ARCHITECTS—MAGINNIS & WALSH, ASSOCIATE ARCHITECTS
CHURCH OF THE SACRED HEART, WASHINGTON, D. C.



JUNE 6, 1923

THE AMERICAN ARCHITECT—THE ARCHITECTURAL REVIEW

VOL. XXII, NO. 111